

First Annual

Triple Helix Summit

February 12 – 13, 2007



University of Hawaii • East West Center • Hawaii Imin International Conference Center • Honolulu, Hawaii

Community of Practice Panel

An Overview of the CoP Concept

Leigh W. Jerome, Ph.D.



Regional Innovation

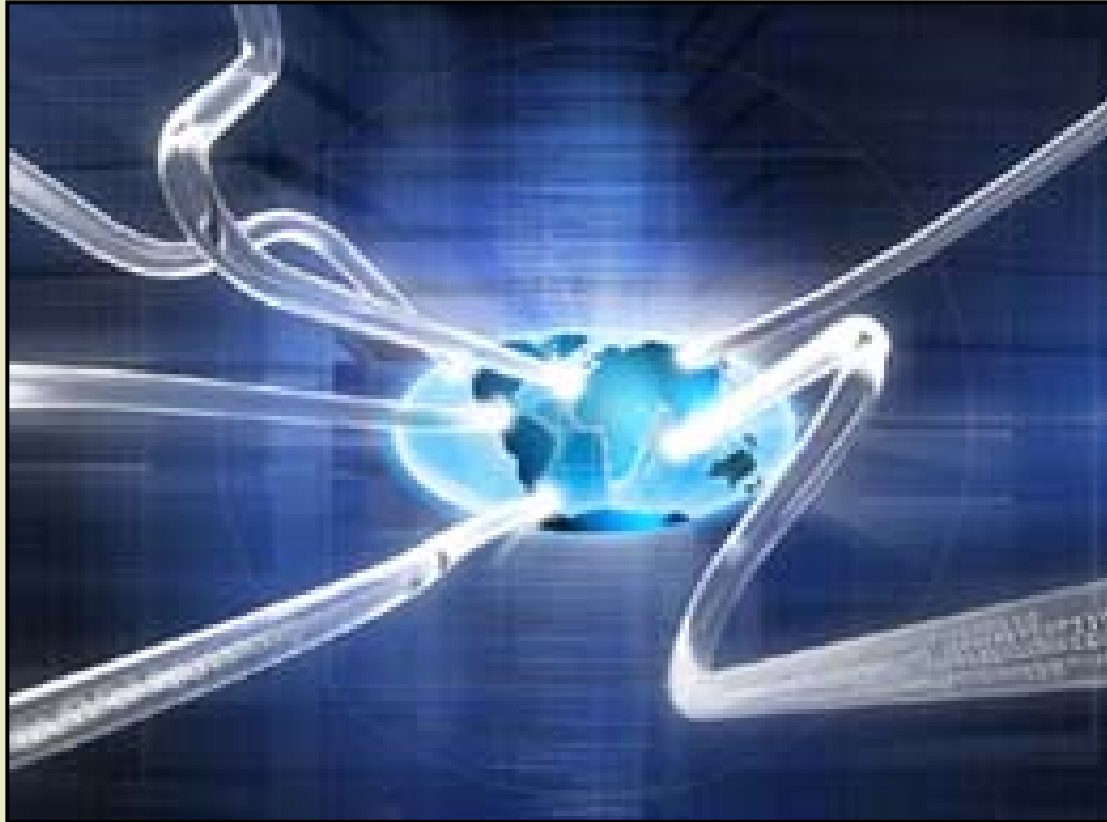


Essential components of regional innovation systems:

- **Clustering** – A geographic concentration of competing and cooperating ventures that maximize flow of information and ideas, collaborations and resources (e.g. Silicon Valley).
- **Knowledge Spillovers** – Knowledge is difficult to contain and may thus spill over to benefit others who are vigilant and able to recognize its potential.
- **Absorptive Capacity** – An organization's ability to develop or adopt innovations, perceive opportunities and, use the information to develop products or processes.



Knowledge Flows



"We are in the midst of a growing preeminence of knowledge capitalization when economic growth depends on developing new cycles and structures of innovation."

(Sutz, 1998)



Interdisciplinarity



“Innovation increasingly takes place at the interfaces such that partnerships that straddle the politics/science boundaries can internalize flexibility and innovation.” (Leydesdorff & Etzkowitz, 2001)



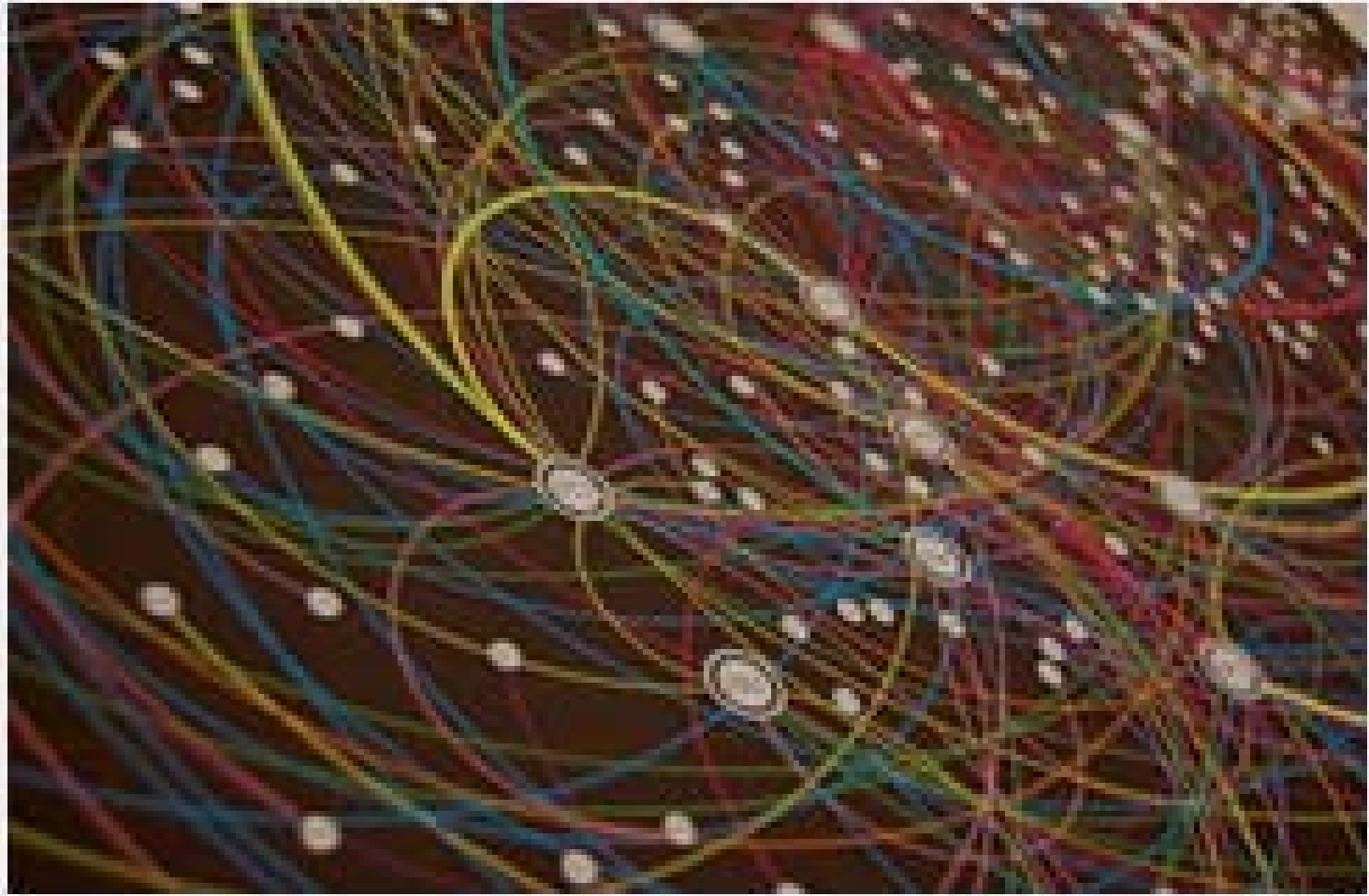
Community of Practice



Social Capital



Distributed CoP



Triple Helix CoP

The Triple Helix Community of Practice will work to establish a mutual language for cross-disciplinary, cross-cultural, and cross-organization research and to promote a virtuous circle of knowledge diffusion.



Community of Practice Panel

