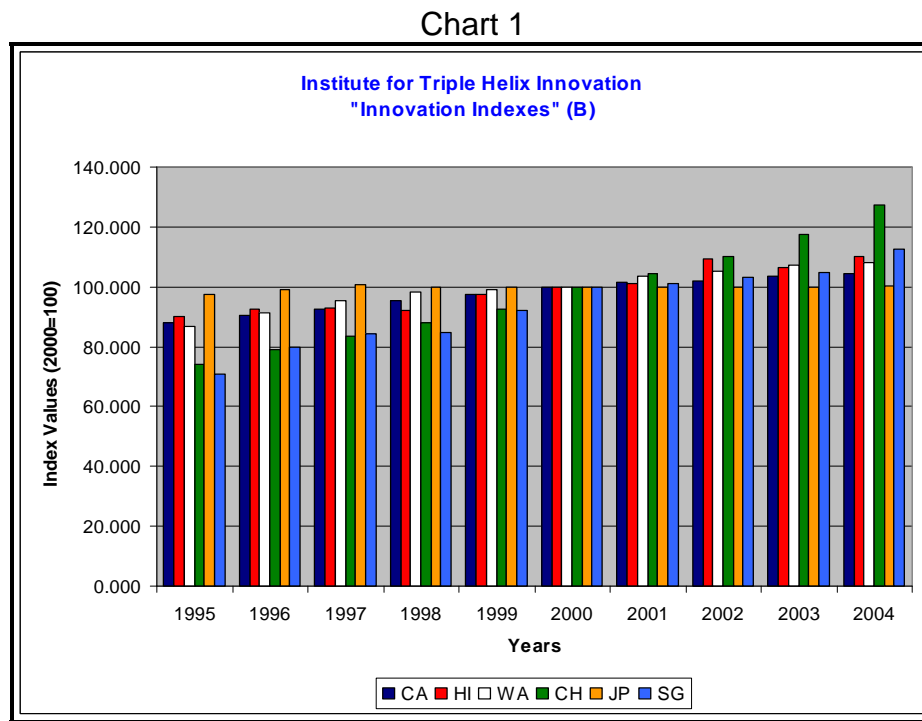


## Inaugural Release of Initial Innovation Indexes

The Institute for Triple Helix Innovation conducted its inaugural release of Innovation Indexes, which indicate innovation potential for six Pacific Region locales: The states of California (CA), Hawaii (HI), and Washington (WA), and the nations of China (CH), Japan (JP), and Singapore (SG). The Institute labels these indexes as “initial” because they are being released for the first time, and the Institute has plans to improve the indexes in the years ahead. For a detailed statement on the development of the indexes, including a methodology statement, please visit the following Web site: <http://www.triplehelixinstitute.org/projectInfo/megatrend.html>

Innovation Indexes reflect the contributions of four categories of innovation potential: Technological, economic, demographic, and ecological (sustainability). The base period for the indexes is 1995, their starting point; the reference period is 2000. This release reflects indexes spanning the period 1995-2004.

Chart 1 and Tables 1 and 2 provide “Version B” of the indexes. They show that over the 10-year period covered by the indexes, China and Singapore reflected the strongest average growth; 6.2% and 5.3% respectively. The states of Washington (2.5%) and Hawaii (2.3%) showed considerably slower growth, followed by California (1.9%). Japan showed the slowest growth (0.3%).



Copyright 2007 - The Institute for Triple Helix Innovation

The Institute allows the use and reproduction of this document for noncommercial purposes but require that the author, the title, the Institute, and the document URL be cited clearly. Contact The Institute for Triple Helix Innovation to request permission to reproduce for commercial purposes.

Table 1.—Innovation Indexes (Version B)  
(Index levels, 2000=100)

	CA	HI	WA	CH	JP	SG
1995	88.188	89.911	86.668	73.970	97.604	70.998
1996	90.319	92.709	91.149	78.889	99.208	79.730
1997	92.374	93.085	95.186	83.353	100.687	84.428
1998	95.265	91.997	98.161	87.854	100.007	84.801
1999	97.486	97.288	99.089	92.610	100.069	92.168
2000	100.000	100.000	100.000	100.000	100.000	100.000
2001	101.618	101.087	103.376	104.329	99.866	101.065
2002	101.884	109.315	105.033	109.961	99.895	102.963
2003	103.762	106.408	107.309	117.556	100.029	104.683
2004	104.576	110.053	107.932	127.174	100.422	112.625

Table 2.—Innovation Indexes (Version B)  
(Percent changes)

	CA	HI	WA	CH	JP	SG
1996	2.4	3.1	5.2	6.7	1.6	12.3
1997	2.3	0.4	4.4	5.7	1.5	5.9
1998	3.1	-1.2	3.1	5.4	-0.7	0.4
1999	2.3	5.8	0.9	5.4	0.1	8.7
2000	2.6	2.8	0.9	8.0	-0.1	8.5
2001	1.6	1.1	3.4	4.3	-0.1	1.1
2002	0.3	8.1	1.6	5.4	0.0	1.9
2003	1.8	-2.7	2.2	6.9	0.1	1.7
2004	0.8	3.4	0.6	8.2	0.4	7.6
Average	1.9	2.3	2.5	6.2	0.3	5.3

Version B of the indexes is computed by averaging the contributions of the aforementioned four categories of innovation potential, reflecting their central tendency. Version A of the indexes is computed by summing the contributions of the categories; i.e., the categories are fully reflected in the indexes.

The Institute plans to release new and revised Innovation Indexes through the year 2007 in July of 2008.

For answers to questions about the Innovation Indexes or to provide comments, please contact: Dr. Brooks Robinson, Senior Economist for Research, Institute for Triple Helix Innovation, John A. Burns School of Medicine, Medical Education Building, Suite 212, 651 Ilalo Street, Honolulu, HI 96813, [brooks.robinson@pacifichui.org](mailto:brooks.robinson@pacifichui.org), 808.433.1085 (Telephone), 808.433.1920 (Facsimile).

--##--

Copyright 2007 - The Institute for Triple Helix Innovation

The Institute allows the use and reproduction of this document for noncommercial purposes but require that the author, the title, the Institute, and the document URL be cited clearly. Contact The Institute for Triple Helix Innovation to request permission to reproduce for commercial purposes.