

Inaugural Release of Initial Innovation Indexes for Japan

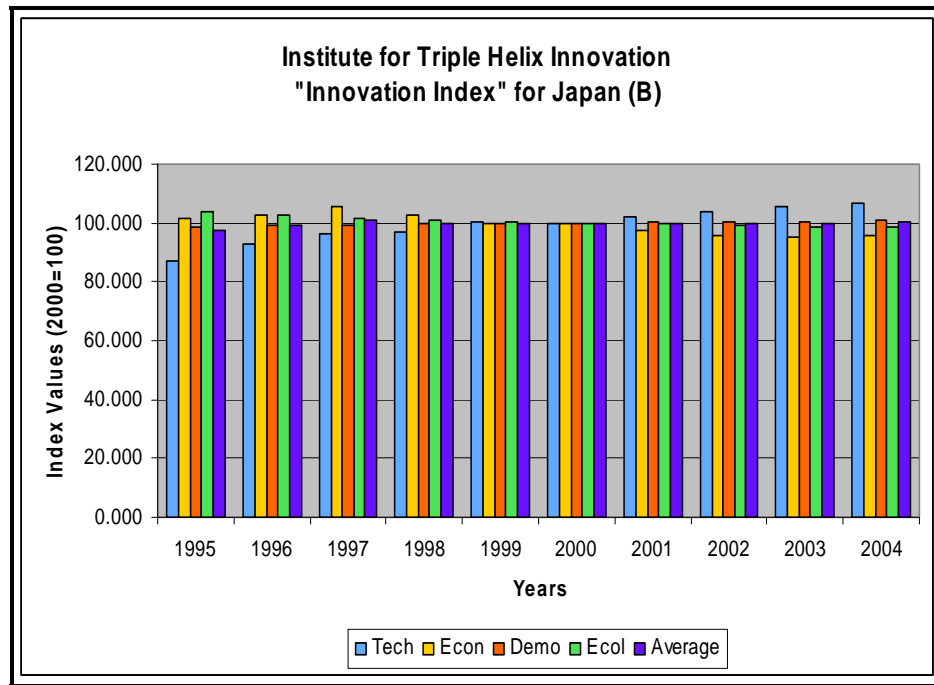
The Institute for Triple Helix Innovation conducted its inaugural release of Innovation Indexes, which indicate innovation potential for six Pacific Region locales: The states of California, Hawaii, and Washington, and the nations of China, Japan, and Singapore. The Institute labels these indexes as "initial" because they are being released for the first time, and the Institute has plans to improve the indexes in the years ahead. For a detailed statement on the development of the indexes, including a methodology statement, please visit the following Web site:

<http://www.triplehelixinstitute.org/projectInfo/megatrend.html>

Innovation Indexes reflect the contributions of four categories of innovation potential: Technological (Tech), economic (Econ), demographic (Demo), and ecological (Ecol, sustainability). The base period for the indexes is 1995, their starting point; the reference period is 2000. This release reflects indexes spanning the period 1995-2004.

Chart 1 and Tables 1 and 2 provide the "Version B" index for Japan. They show that over the 10-year period covered, Japan's Innovation Index increased an average of 0.3% each year. The technological (2.3%) category reflected an increase that was higher than the average; the demographic (0.2%) category reflected an increase that was lower than the average; and the economic (-0.6%) and ecological (sustainability (-0.6%)) categories reflected decreases over the period.

Chart 1



Copyright 2007 - The Institute for Triple Helix Innovation

The Institute allows the use and reproduction of this document for noncommercial purposes but require that the author, the title, the Institute, and the document URL be cited clearly. Contact The Institute for Triple Helix Innovation to request permission to reproduce for commercial purposes.

Table 1.—Innovation Index for China (Version B)
(Index levels, 2000=100)

	Tech	Econ	Demo	Ecol	Average
1995	87.270	101.291	98.882	103.827	97.604
1996	92.707	102.822	99.013	102.633	99.208
1997	96.159	105.803	99.303	101.731	100.687
1998	96.867	102.969	99.545	100.743	100.007
1999	100.331	100.017	99.723	100.207	100.069
2000	100.000	100.000	100.000	100.000	100.000
2001	101.951	97.654	100.320	99.586	99.866
2002	104.092	96.009	100.444	99.203	99.895
2003	105.430	95.419	100.654	98.870	100.029
2004	106.735	95.957	100.813	98.496	100.422

Table 2.—Innovation Index for China (Version B)
(Percent changes)

	Tech	Econ	Demo	Ecol	Average
1996	6.2	1.5	0.1	-1.2	1.6
1997	3.7	2.9	0.3	-0.9	1.5
1998	0.7	-2.7	0.2	-1.0	-0.7
1999	3.6	-2.9	0.2	-0.5	0.1
2000	-0.3	0.0	0.3	-0.2	-0.1
2001	2.0	-2.3	0.3	-0.4	-0.1
2002	2.1	-1.7	0.1	-0.4	0.0
2003	1.3	-0.6	0.2	-0.3	0.1
2004	1.2	0.6	0.2	-0.4	0.4
Average	2.3	-0.6	0.2	-0.6	0.3

The “Version B” index is computed by averaging the contributions of the aforementioned four categories of innovation potential, reflecting their central tendency. The “Version A” index is computed by summing the contributions of the categories; i.e., each category is fully reflected in the index.

The Institute plans to release new and revised Innovation Indexes through the year 2007 in July of 2008.

For answers to questions about the Innovation Indexes or to provide comments, please contact: Dr. Brooks Robinson, Senior Economist for Research, Institute for Triple Helix Innovation, John A. Burns School of Medicine, Medical Education Building, Suite 212, 651 Ilalo Street, Honolulu, HI 96813, brooks.robinson@pacifichui.org, 808.433.1085 (Telephone), 808.433.1920 (Facsimile).

--##--