

Inaugural Release of Initial Innovation Indexes for Japan

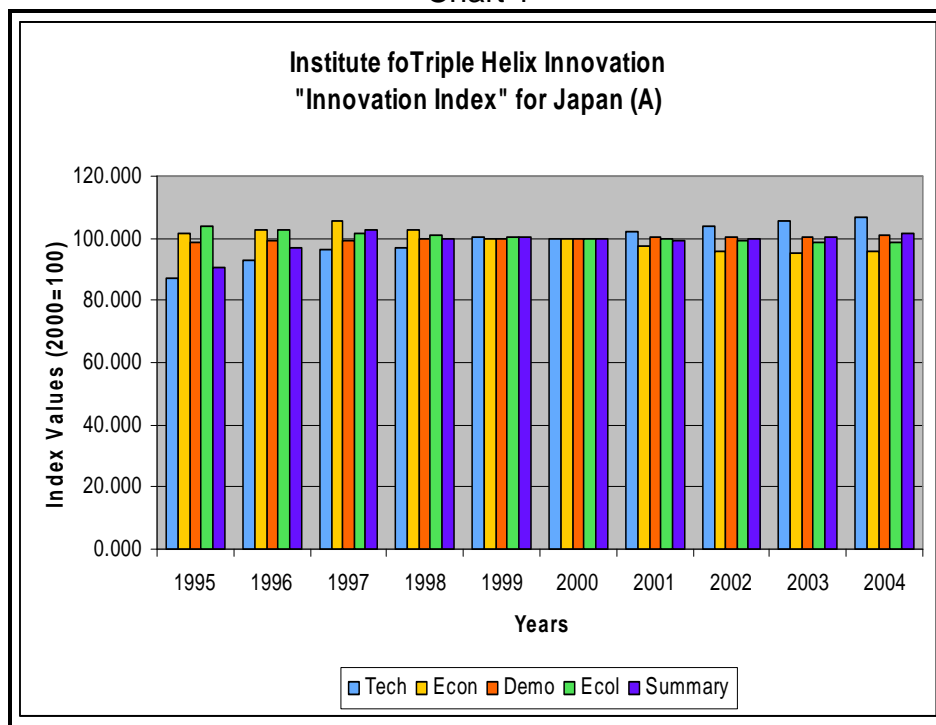
The Institute for Triple Helix Innovation conducted its inaugural release of Innovation Indexes, which indicate innovation potential for six Pacific Region locales: The states of California, Hawaii, and Washington, and the nations of China, Japan, and Singapore. The Institute labels these indexes as "initial" because they are being released for the first time, and the Institute has plans to improve the indexes in the years ahead. For a detailed statement on the development of the indexes, including a methodology statement, please visit the following Web site:

<http://www.triplehelixinstitute.org/projectInfo/megatrend.html>

Innovation Indexes reflect the contributions of four categories of innovation potential: Technological (Tech), economic (Econ), demographic (Demo), and ecological (Ecol, sustainability). The base period for the indexes is 1995, their starting point; the reference period is 2000. This release reflects indexes spanning the period 1995-2004.

Chart 1 and Tables 1 and 2 provide "Version A" of the index for Japan. They show that over the 10-year period covered, Japan's Innovation Index increased an average of 1.3% each year. Technological (2.3%) and demographic (0.2%) categories contributed positively, while economic (-0.6%) and ecological (sustainability) (-0.6) slowed the overall increase.

Chart 1



Copyright 2007 - The Institute for Triple Helix Innovation

The Institute allows the use and reproduction of this document for noncommercial purposes but require that the author, the title, the Institute, and the document URL be cited clearly. Contact The Institute for Triple Helix Innovation to request permission to reproduce for commercial purposes.

Table 1.—Innovation Index for Japan (Version A)
(Index levels, 2000=100)

	Tech	Econ	Demo	Ecol	Summary
1995	87.270	101.291	98.882	103.827	90.752
1996	92.707	102.822	99.013	102.633	96.866
1997	96.159	105.803	99.303	101.731	102.778
1998	96.867	102.969	99.545	100.743	100.028
1999	100.331	100.017	99.723	100.207	100.277
2000	100.000	100.000	100.000	100.000	100.000
2001	101.951	97.654	100.320	99.586	99.465
2002	104.092	96.009	100.444	99.203	99.582
2003	105.430	95.419	100.654	98.870	100.115
2004	106.735	95.957	100.813	98.496	101.699

Table 2.—Innovation Index for Japan (Version A)
(Percent changes)

	Tech	Econ	Demo	Ecol	Summary
1996	6.2	1.5	0.1	-1.2	6.7
1997	3.7	2.9	0.3	-0.9	6.1
1998	0.7	-2.7	0.2	-1.0	-2.7
1999	3.6	-2.9	0.2	-0.5	0.2
2000	-0.3	0.0	0.3	-0.2	-0.3
2001	2.0	-2.3	0.3	-0.4	-0.5
2002	2.1	-1.7	0.1	-0.4	0.1
2003	1.3	-0.6	0.2	-0.3	0.5
2004	1.2	0.6	0.2	-0.4	1.6
Average	2.3	-0.6	0.2	-0.6	1.3

The “Version A” index is computed by summing the contributions of the aforementioned four categories of innovation potential; i.e., each category is fully reflected in the index. The “Version B” index is computed by averaging the contributions of the categories, reflecting the central tendency of the categories.

The Institute plans to release new and revised Innovation Indexes through the year 2007 in July of 2008.

For answers to questions about the Innovation Indexes or to provide comments, please contact: Dr. Brooks Robinson, Senior Economist for Research, Institute for Triple Helix Innovation, John A. Burns School of Medicine, Medical Education Building, Suite 212, 651 Ilalo Street, Honolulu, HI 96813, brooks.robinson@pacifichui.org, 808.433.1085 (Telephone), 808.433.1920 (Facsimile).

--##--

Copyright 2007 - The Institute for Triple Helix Innovation

The Institute allows the use and reproduction of this document for noncommercial purposes but require that the author, the title, the Institute, and the document URL be cited clearly. Contact The Institute for Triple Helix Innovation to request permission to reproduce for commercial purposes.