

Inaugural Release of Initial Innovation Indexes for China

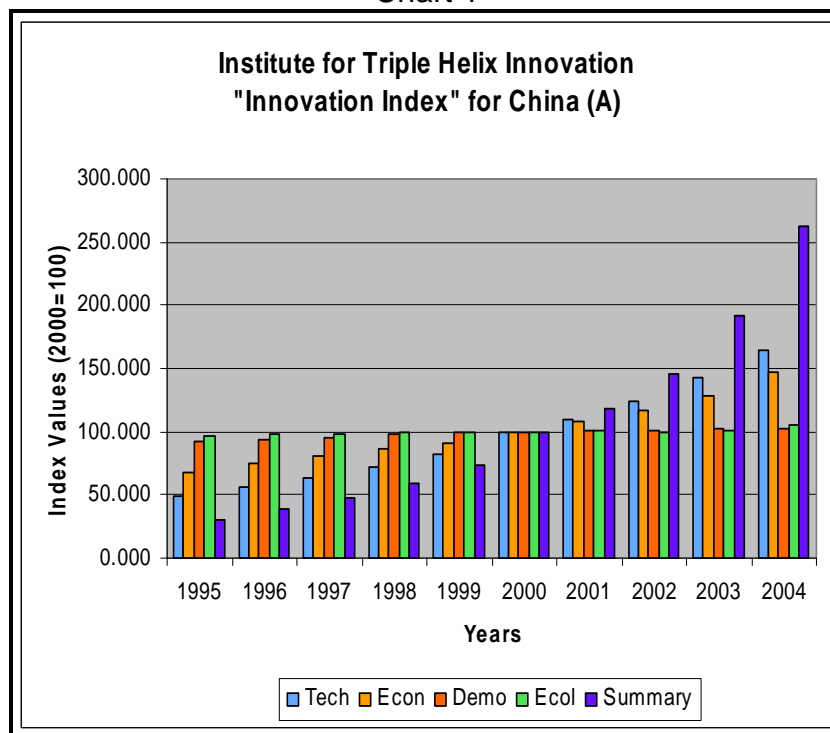
The Institute for Triple Helix Innovation conducted its inaugural release of Innovation Indexes, which indicate innovation potential for six Pacific Region locales: The states of California, Hawaii, and Washington, and the nations of China, Japan, and Singapore. The Institute labels these indexes as "initial" because they are being released for the first time, and the Institute has plans to improve the indexes in the years ahead. For a detailed statement on the development of the indexes, including a methodology statement, please visit the following Web site:

<http://www.triplehelixinstitute.org/projectInfo/megatrend.html>

Innovation Indexes reflect the contributions of four categories of innovation potential: Technological (Tech), economic (Econ), demographic (Demo), and ecological (Ecol, sustainability). The base period for the indexes is 1995, their starting point; the reference period is 2000. This release reflects indexes spanning the period 1995-2004.

Chart 1 and Tables 1 and 2 provide "Version A" of the index for China. They show that over the 10-year period covered, China's Innovation Index increased an average of 27.5% each year: Technological (14.4%), economic (9.0%), demographic (1.2%), and ecological (sustainability) (0.9%).

Chart 1



Copyright 2007 - The Institute for Triple Helix Innovation

The Institute allows the use and reproduction of this document for noncommercial purposes but require that the author, the title, the Institute, and the document URL be cited clearly. Contact The Institute for Triple Helix Innovation to request permission to reproduce for commercial purposes.

Table 1.—Innovation Index for China (Version A)
(Index levels, 2000=100)

	Tech	Econ	Demo	Ecol	Summary
1995	49.180	68.072	92.570	96.492	29.760
1996	56.307	75.019	93.997	97.455	38.555
1997	63.767	80.601	95.115	98.659	48.089
1998	71.880	85.946	97.364	98.968	59.392
1999	82.055	91.226	98.826	99.381	73.391
2000	100.000	100.000	100.000	100.000	100.000
2001	108.950	107.469	100.257	100.928	118.517
2002	124.260	116.369	101.167	99.966	146.365
2003	143.492	128.609	101.888	101.616	191.477
2004	164.841	147.684	102.623	104.780	262.906

Table 2.—Innovation Index for China (Version A)
(Percent changes)

	Tech	Econ	Demo	Ecol	Summary
1996	14.5	10.2	1.5	1.0	29.6
1997	13.2	7.4	1.2	1.2	24.7
1998	12.7	6.6	2.4	0.3	23.5
1999	14.2	6.1	1.5	0.4	23.6
2000	21.9	9.6	1.2	0.6	36.3
2001	9.0	7.5	0.3	0.9	18.5
2002	14.1	8.3	0.9	-1.0	23.5
2003	15.5	10.5	0.7	1.7	30.8
2004	14.9	14.8	0.7	3.1	37.3
Average	14.4	9.0	1.2	0.9	27.5

The “Version A” index is computed by summing the contributions of the aforementioned four categories of innovation potential; i.e., each category is fully reflected in the index. The “Version B” index is computed by averaging the contributions of the categories, reflecting the central tendency of the categories.

The Institute plans to release new and revised Innovation Indexes through the year 2007 in July of 2008.

For answers to questions about the Innovation Indexes or to provide comments, please contact: Dr. Brooks Robinson, Senior Economist for Research, Institute for Triple Helix Innovation, John A. Burns School of Medicine, Medical Education Building, Suite 212, 651 Ilalo Street, Honolulu, HI 96813, brooks.robinson@pacifichui.org, 808.433.1085 (Telephone), 808.433.1920 (Facsimile).

--##--

Copyright 2007 - The Institute for Triple Helix Innovation

The Institute allows the use and reproduction of this document for noncommercial purposes but require that the author, the title, the Institute, and the document URL be cited clearly. Contact The Institute for Triple Helix Innovation to request permission to reproduce for commercial purposes.